

SPECIFICATION

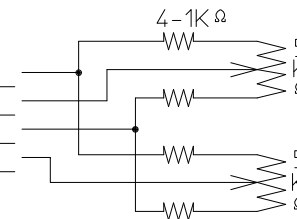
USE	1/2" (φ8mm)			
FOCAL LENGTH	f=7.5~127mm			
IRIS RANGE	F=1.6~40			
BACK FOCAL LENGTH	14.9 mm in air			
IMAGE SIZE	4.8x6.4mm (φ8)		3.6x4.8mm (φ6)	
FIELD ANGLE	DIA.	(w) 55.8° (t) 3.6°	(w) 43.2° (t) 2.7°	(w) (t)
	HOR.	(w) 45.6° (t) 2.9°	(w) 34.9° (t) 2.2°	(w) (t)
	VER.	(w) 34.7° (t) 2.2°	(w) 26.3° (t) 1.7°	(w) (t)
FIELD OF VIEW AT M.O.D	DIA.	(w) 1485mm (t) 91mm	(w) 1117mm (t) 69mm	(w) (t)
	HOR.	(w) 5961mm (t) 73mm	(w) 892mm (t) 55mm	(w) (t)
	VER.	(w) 446mm (t) 55mm	(w) 667mm (t) 42mm	(w) (t)
DISTORTION (TV)	(w) -0.8% (t) 0.9%	(w) -0.7% (t) 0.5%	(w) (t)	(w) (t)
FOCUS RANGE	∞~1.5m			
CLEAR APERTURE	FRONT φ50mm		REAR φ12.7mm	
EXIT PUPIL POSITION	-89.1mm			
WEIGHT	600 g (AMDC)		600 g (AMPDC)	

① MOTOR & POT. CABLE (FOCUS, ZOOM)*

- (+) GREEN FOCUS NEAR
- (+) BLACK FOCUS FAR
- (+) YELLOW ZOOM IN
- (+) RED ZOOM OUT

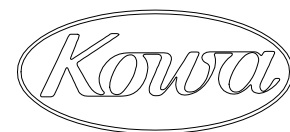
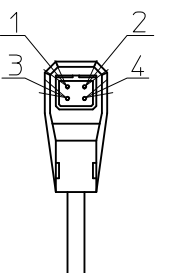
- (+) BROWN POT. SUPPLY
- BLUE FOCUS WIPER
- (-) WHITE POT. RETURN
- GRAY ZOOM WIPER

* AMPDC MODEL ONLY.



② IRIS CABLE (DIRECT CONTROL)

DRIVE COIL	RESISTOR	190Ω (20°C)
	COLOR	RED(+) 3pin BLACK 4pin
BRAKE COIL	RESISTOR	1150Ω (20°C)
	COLOR	YELLOW(+) 2pin GREEN 1pin
DRIVE VOLT.	OPEN	LESS THAN +4V
	CLOSE	OVER THAN 0V W/CLOSING SPRING



		MODEL NAME
		1/2" F1.6 7.5-127mm
		MODEL NUMBER
		LMZ7527AMDC LMZ7527AMPDC
2020.11.26	Date	